

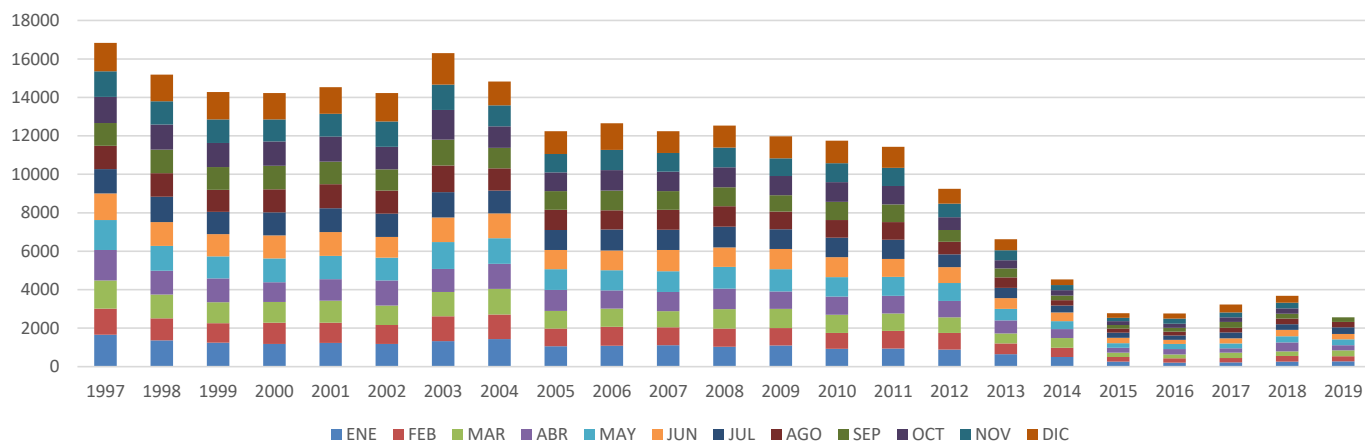
ESTADÍSTICAS DE SACRIFICIO DEL AÑO
1997 AL 2019

PROCESADORA
MUNICIPAL
DE CARNE



BOVINOS	AÑO	ENE	FEB	MAR	ABR	MAY	JUN	JUL	AGO	SEP	OCT	NOV	DIC	TOTAL
	1997	1,662	1,361	1,465	1,583	1,547	1,389	1,260	1,219	1,177	1,357	1,334	1,476	16,830
	1998	1,362	1,156	1,230	1,234	1,297	1,233	1,325	1,216	1,229	1,304	1,211	1,386	15,183
	1999	1,242	1,016	1,098	1,235	1,139	1,159	1,157	1,149	1,186	1,247	1,225	1,419	14,272
	2000	1,186	1,106	1,067	1,033	1,234	1,195	1,205	1,196	1,219	1,267	1,146	1,364	14,218
	2001	1,228	1,059	1,137	1,122	1,215	1,242	1,237	1,246	1,166	1,309	1,191	1,382	14,534
	2002	1,178	991	1,013	1,296	1,183	1,078	1,214	1,199	1,101	1,178	1,313	1,479	14,223
	2003	1,331	1,289	1,264	1,203	1,394	1,271	1,320	1,382	1,344	1,547	1,317	1,633	16,295
	2004	1,436	1,273	1,334	1,299	1,330	1,292	1,192	1,157	1,057	1,128	1,087	1,238	14,823
	2005	1,064	920	916	1,088	1,080	998	1,040	1,048	969	979	959	1,174	12,235
	2006	1,092	979	949	945	1,043	1,037	1,092	991	1,027	1,063	1,052	1,387	12,657
	2007	1,109	933	841	1,006	1,069	1,104	1,057	1,042	965	1,010	974	1,127	12,237
	2008	1,035	940	1,019	1,060	1,130	1,020	1,069	1,068	980	1,043	1,019	1,146	12,529
	2009	1,102	905	1,002	904	1,155	1,054	1,018	924	854	989	920	1,144	11,971
	2010	931	823	950	941	1,015	1,027	1,013	929	939	1,028	981	1,173	11,750
	2011	938	916	916	910	993	924	1,006	909	920	955	951	1,086	11,424
	2012	890	861	819	846	927	828	674	647	607	673	709	764	9,245
	2013	644	560	526	674	606	558	531	549	455	430	525	562	6,620
	2014	499	486	507	458	417	448	365	281	239	271	274	286	4,531
	2015	265	234	223	255	246	278	261	222	183	198	168	241	2,774
	2016	203	227	203	283	260	217	222	208	198	207	266	266	2,760
	2017	227	226	269	236	248	271	301	236	309	248	249	417	3,237
	2018	262	290	249	461	322	334	290	295	253	281	289	358	3,684
	2019	277	268	307	264	303	280	348	274	243				2,564

SACRIFICIO DE BOVINOS



ESTADÍSTICAS DE SACRIFICIO DEL AÑO
1997 AL 2019

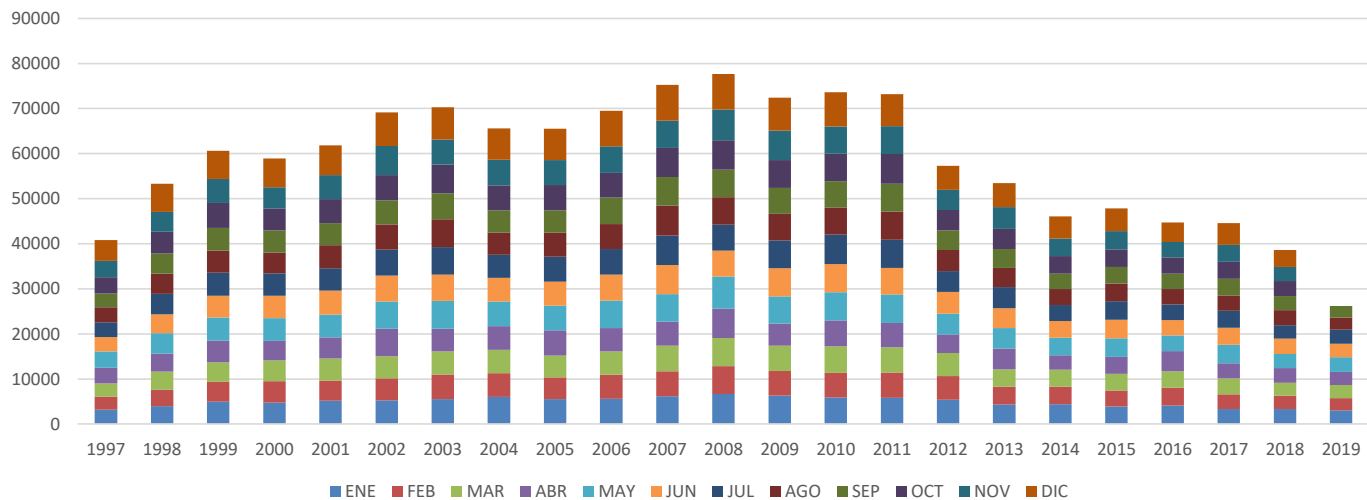
PROCESADORA
MUNICIPAL
DE CARNE



Confiemos
en Colima

PORCINOS	AÑO	ENE	FEB	MAR	ABR	MAY	JUN	JUL	AGO	SEP	OCT	NOV	DIC	TOTAL
	1997	3,204	2,914	2,911	3,435	3,666	3,180	3,229	3,346	3,058	3,650	3,582	4,615	40,790
	1998	3,988	3,625	4,023	3,952	4,556	4,213	4,562	4,424	4,486	4,801	4,436	6,218	53,284
	1999	4,985	4,380	4,340	4,834	5,086	4,843	5,086	4,890	5,050	5,583	5,320	6,259	60,656
	2000	4,780	4,744	4,566	4,341	5,058	4,992	4,922	4,635	4,932	4,897	4,693	6,386	58,946
	2001	5,168	4,488	4,904	4,642	5,101	5,315	4,956	5,113	4,920	5,330	5,314	6,610	61,861
	2002	5,278	4,845	4,894	6,115	6,075	5,744	5,766	5,593	5,303	5,608	6,463	7,433	69,117
	2003	5,555	5,462	5,124	5,013	6,203	5,800	6,070	6,203	5,740	6,438	5,527	7,121	70,256
	2004	6,025	5,231	5,242	5,229	5,460	5,238	5,146	4,916	4,945	5,531	5,646	6,978	65,587
	2005	5,506	4,886	4,771	5,629	5,457	5,357	5,489	5,348	4,981	5,628	5,508	6,972	65,532
	2006	5,588	5,372	5,184	5,164	6,087	5,759	5,644	5,591	5,843	5,480	5,886	7,890	69,488
	2007	6,189	5,510	5,663	5,337	6,157	6,459	6,466	6,728	6,291	6,445	6,089	7,945	75,279
	2008	6,653	6,213	6,241	6,528	7,107	5,762	5,713	6,116	6,080	6,566	6,780	7,922	77,681
	2009	6,297	5,481	5,619	4,869	6,025	6,263	6,222	5,856	5,765	6,183	6,486	7,373	72,439
	2010	5,923	5,432	5,898	5,776	6,183	6,310	6,470	6,048	5,850	6,112	5,999	7,588	73,589
	2011	5,841	5,588	5,575	5,460	6,280	5,904	6,240	6,223	6,187	6,592	6,224	7,090	73,204
	2012	5,390	5,273	5,070	4,171	4,612	4,805	4,640	4,675	4,294	4,576	4,454	5,332	57,292
	2013	4,334	3,957	3,822	4,652	4,531	4,410	4,652	4,306	4,147	4,467	4,862	5,322	53,462
	2014	4,365	3,956	3,763	3,197	3,909	3,668	3,521	3,547	3,465	3,891	3,859	4,903	46,044
	2015	3,933	3,503	3,702	3,779	4,140	4,095	4,125	3,869	3,692	3,917	4,066	4,993	47,814
	2016	4,135	3,940	3,654	4,430	3,494	3,405	3,463	3,430	3,387	3,638	3,405	4,344	44,725
	2017	3,334	3,242	3,556	3,362	4,093	3,764	3,802	3,389	3,702	3,752	3,792	4,786	44,574
	2018	3,353	2,964	2,872	3,255	3,103	3,407	3,010	3,314	3,114	3,311	3,146	3,775	38,624
	2019	3,057	2,686	2,921	2,933	3,223	2,998	3,116	2,735	2,513				26,182

SACRIFICIO DE PORCINOS



ESTADÍSTICAS DE SACRIFICIO DEL AÑO
1997 AL 2019

PROCESADORA
MUNICIPAL
DE CARNE



Confiemos
en Colima

CAPRINOS	AÑO	ENE	FEB	MAR	ABR	MAY	JUN	JUL	AGO	SEP	OCT	NOV	DIC	TOTAL
	1997	192	84	152	105	150	128	114	113	107	116	71	68	1400
	1998	80	62	60	53	75	52	66	52	40	49	50	55	694
	1999	46	34	55	45	45	68	66	99	113	119	121	107	918
	2000	90	103	86	52	78	78	79	76	85	88	89	113	1017
	2001	97	82	91	45	72	68	77	73	83	90	64	71	913
	2002	61	45	36	74	58	45	56	73	64	77	84	95	768
	2003	77	69	53	47	65	50	54	100	100	123	96	62	896
	2004	62	63	47	31	33	53	66	45	54	95	61	90	700
	2005	50	46	50	55	65	63	64	64	40	63	56	69	685
	2006	50	45	34	33	78	53	39	38	61	50	58	78	617
	2007	54	58	35	28	34	32	29	49	85	80	58	120	662
	2008	87	88	56	75	53	48	48	51	64	55	78	94	797
	2009	52	54	68	67	72	52	47	49	44	66	66	58	695
	2010	54	37	140	92	91	98	79	71	89	89	86	117	1043
	2011	97	79	66	55	72	70	78	74	79	57	71	88	886
	2012	61	47	41	49	58	62	80	89	82	61	60	105	795
	2013	65	51	66	67	68	68	65	61	59	38	37	40	685
	2014	48	45	37	34	59	44	48	48	41	38	38	33	513
	2015	32	22	27	18	23	39	46	33	34	38	38	33	383
	2016	24	30	22	42	35	40	50	35	45	77	73	46	519
	2017	33	44	25	21	33	35	21	28	25	48	29	37	379
	2018	22	28	20	14	22	31	35	88	64	65	75	69	533
	2019	63	57	65	41	66	71	56	98	74				591

SACRIFICIO DE CAPRINOS

